

Alberta HIV Rates

HIV Today

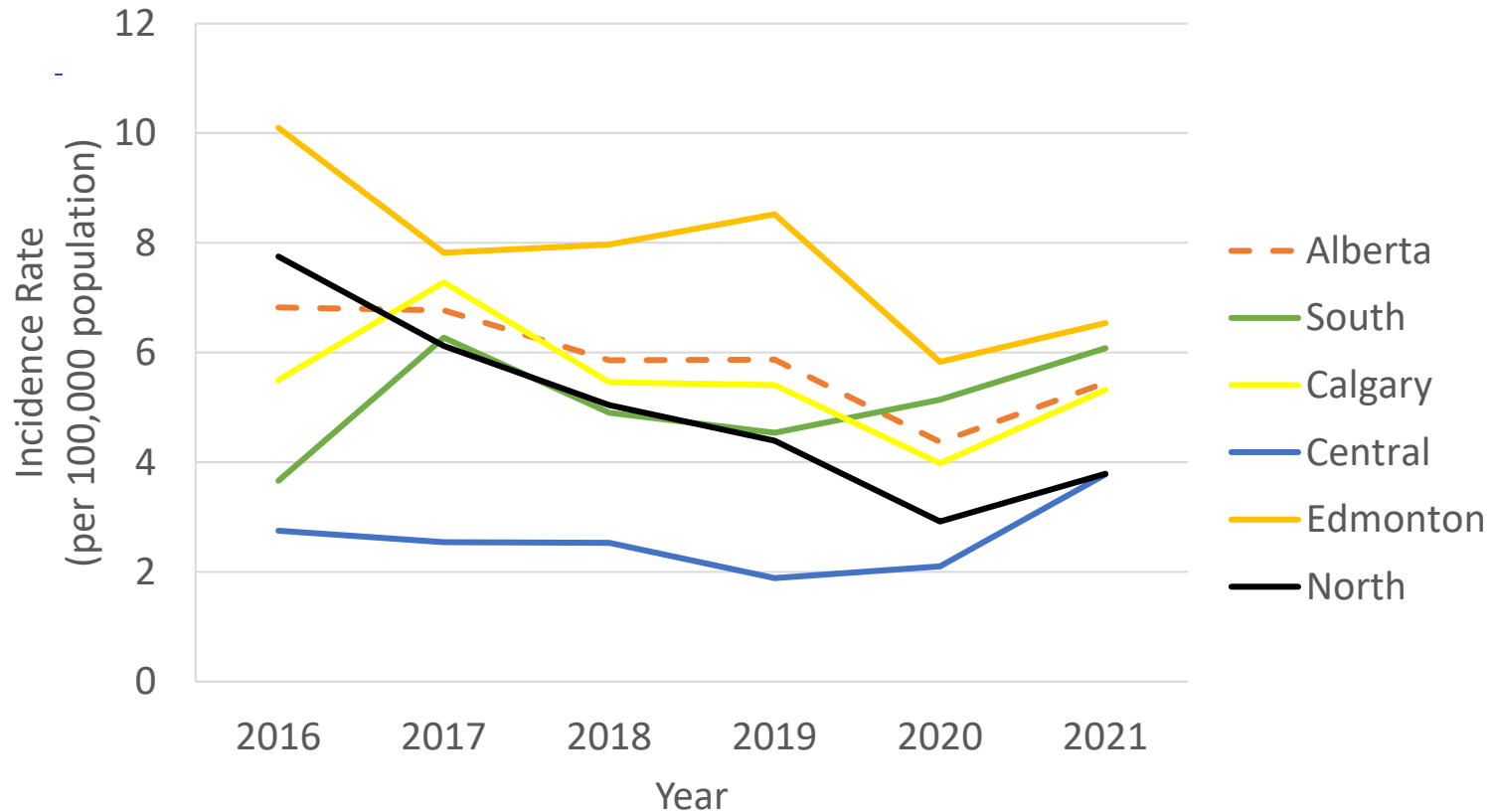
STBBI Videoconference

First Nations and Inuit Health Branch

March 28, 2023



Rates of Newly Diagnosed HIV cases in Alberta by Zone 2016-2021

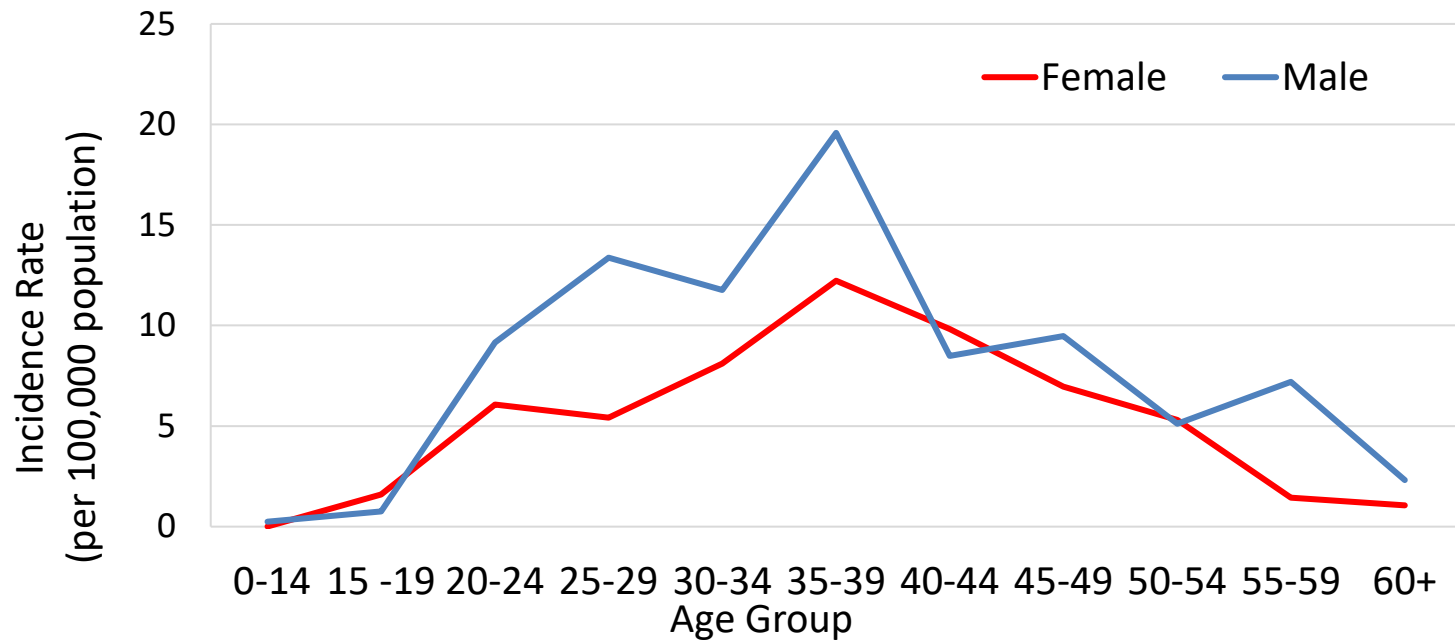


The rate of newly diagnosed HIV cases increased for all zones from 2020 to 2021.

Data pulled on Sept 20, 2022 from the AH Interactive Health Data Application



Rates of Newly Diagnosed HIV Alberta Cases by Age and Sex, 2021

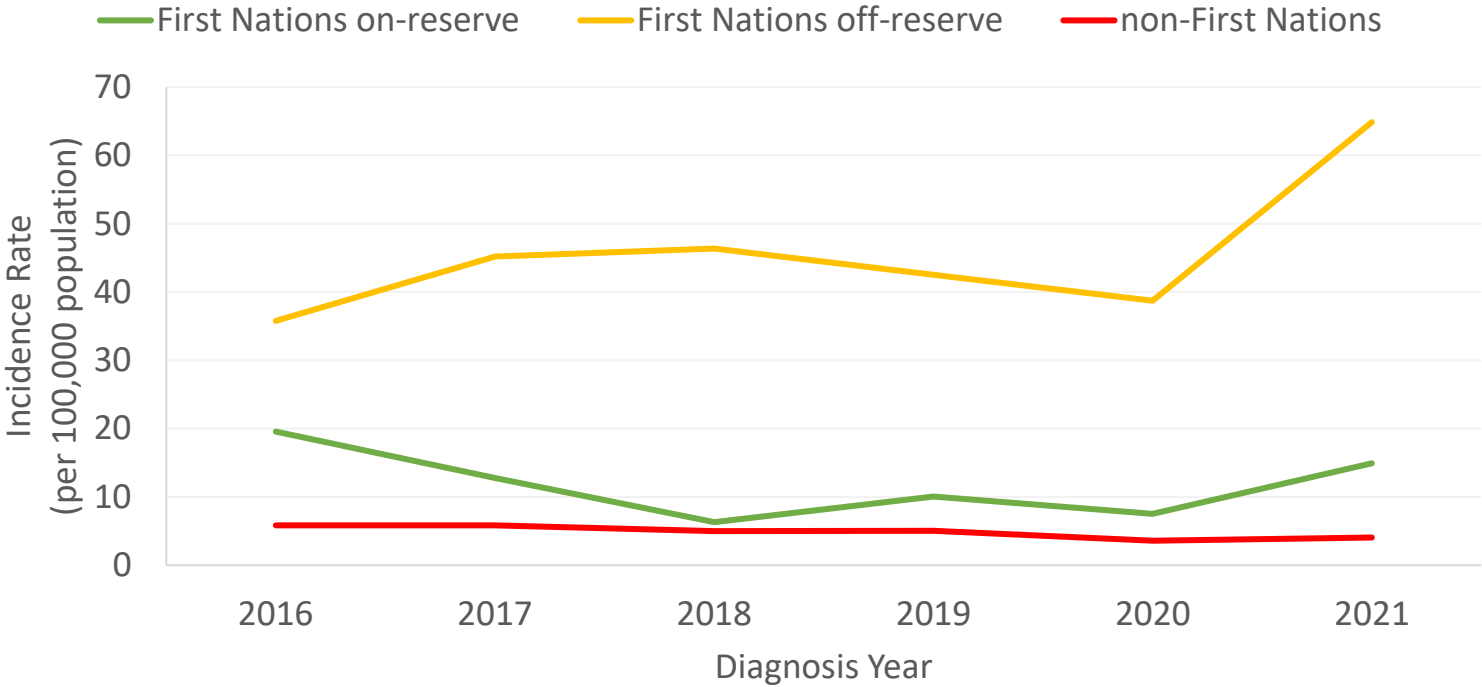


In 2021, the male incidence rate (blue line) was higher than the female rate (red line) for every age group except for 15-19, 40-44 and 50-54 age groups. Highest rates for males and females were in the 35-39 age group

Data pulled on Sept 20, 2022 from the AH Interactive Health Data Application



Rates of Reported HIV cases in Alberta by Population Group, 2016-2021

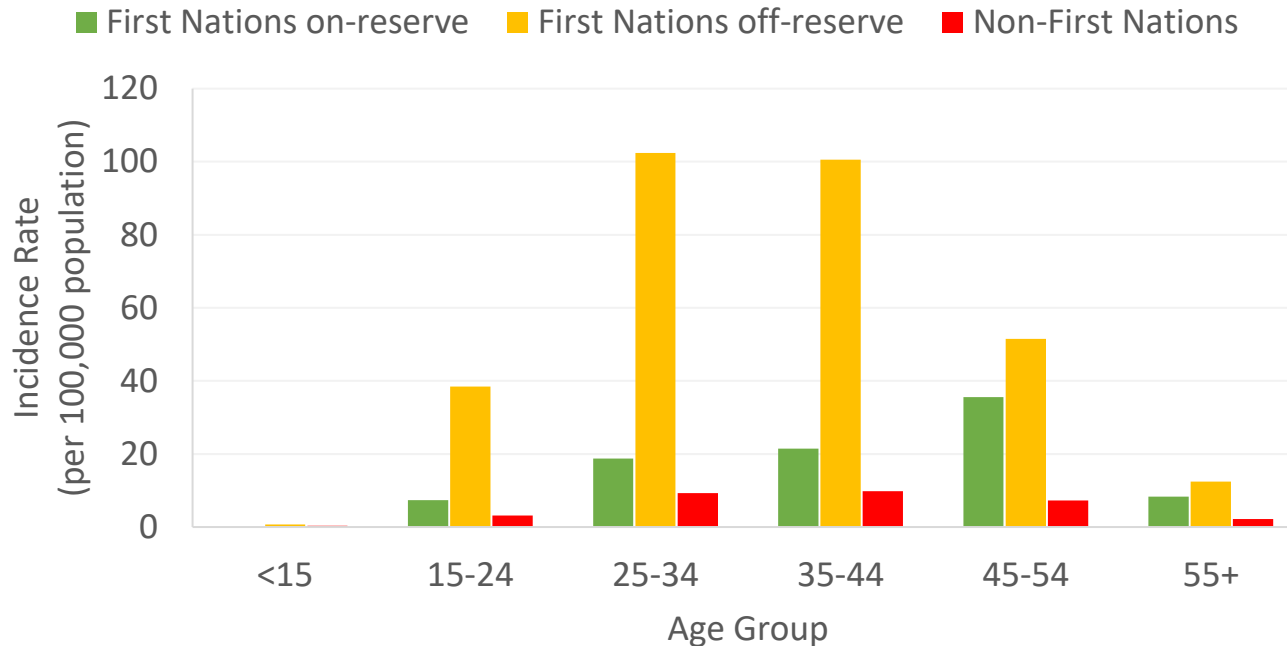


The rate is higher among First Nations people both on and off reserve than non-First Nations rate. The rate is highest amongst First Nations people living off reserve.

Data prepared for FNIHB-AB by Alberta Health, and ISC-IRS



Average Rate of Newly diagnosed HIV Infections by Age and Population Group, 2021

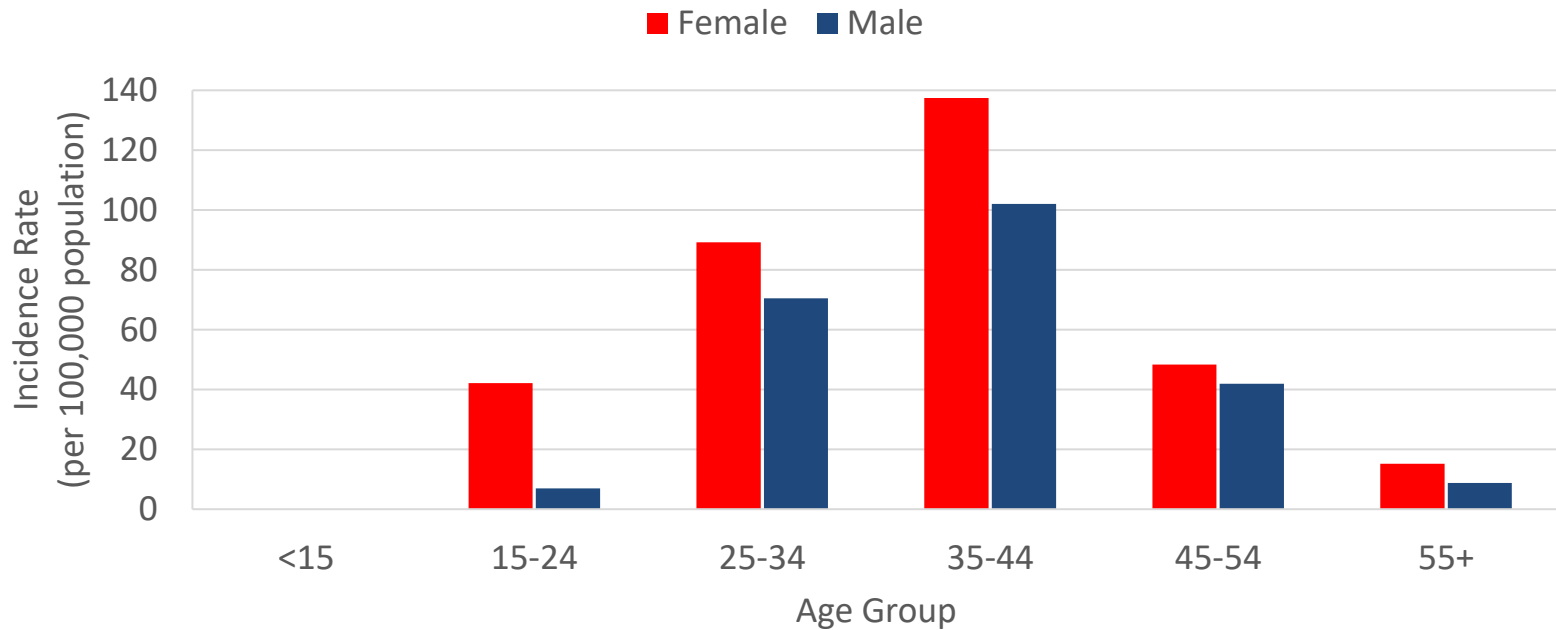


The rate is highest among **First Nations People** living off reserve across all age groups.

Data prepared for FNIHB-AB by Alberta Health, and ISC-IRS



Rates of New HIV Infections Among First Nations People Living in Alberta by Age and Sex, 2021



For males and females, the highest incidence rate occurred in 35-44 age group, followed by rate in the 25-34 age group.

Females had a higher incidence rate compared to males in every age group

Data prepared for FNIHB-AB by Alberta Health, and ISC-IRS

